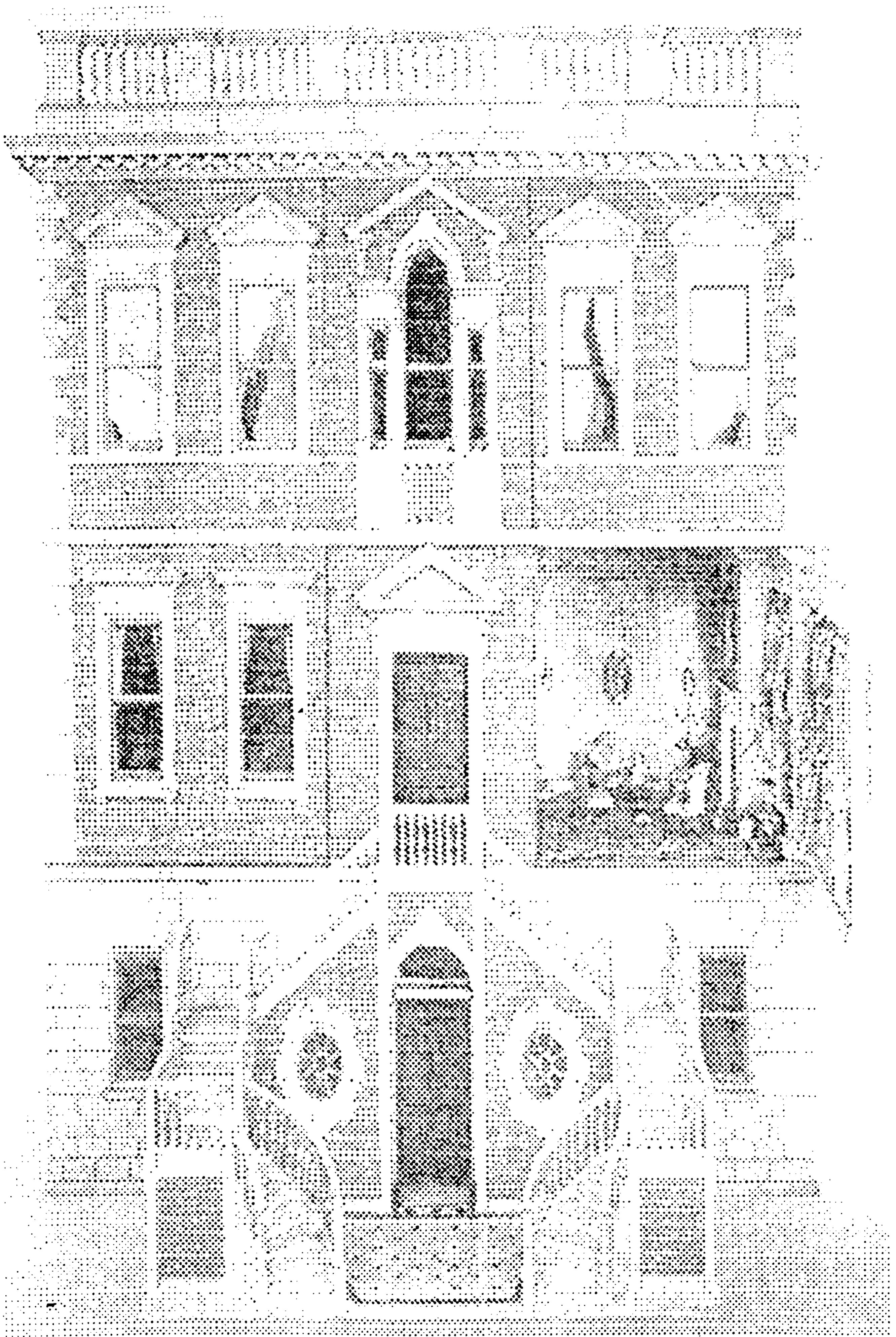


Leeds Arts Centre  
presents

# A Doll's House



by Henrik Ibsen

translated by Christopher Hampton

Thursday 28 - Saturday 30 January 1999

# A Doll's House

Ibsen's famous play illustrates the difference between "two kinds of conscience, one for men and one, quite different, for women."

Nora commits forgery, to secure a loan fraudulently, to save the life of her husband, Torvald. It is Nora's secret, and she is proud of her actions which were motivated by love. Discovery threatens however when Torvald's new job puts him in authority over the lender and jeopardises the man's career and security.

What will happen when the truth comes out? Nora struggles desperately for her very life, terrified of Torvald's reaction, while hoping for his forgiveness and protection. Not even she can anticipate how much their relationship will be changed by revelation.

*A Doll's House* premiered at the Royal Theatre, Copenhagen on 21 December 1879. No one could have predicted the immediate and sensational triumph which followed - making Ibsen internationally famous. The Danish playwright and critic Erik Bogh commented:

It is long since any new play was awaited with such excitement, and even longer since a new play brought so much that is original to the stage, but it is beyond memory since a play so simple in its action and so everyday in its dress made such an impression of artistic mastery . . . not a single declamatory phrase, no high dramatics, no drop of blood, not even a tear; never for a moment was the dagger of tragedy raised . . . Every needless line is cut, every exchange carries the action forward, there is not a superfluous effect in the whole play. . . The mere fact that the author succeeded with the help of only these five characters in keeping our interest sustained through a whole evening is sufficient proof of Ibsen's mastery.

*A Doll's House* has been much discussed, dissected for its "message" - even hailed as a feminist manifesto. Critical acclaim has always accompanied what is perhaps Ibsen's most popular play. What remains at the centre of all this however, is a simple but engrossing emotional drama - Ibsen never preaches, but allows us to follow the story and decide for ourselves.

The action of the play takes place in the Helmers' apartment over three days of Christmas - the period is late nineteenth century.

## Act One

Christmas Eve - late morning

## Act Two

Christmas Day - afternoon

## Act Three

Boxing Day - late evening

There will be one interval after Act I and a short break between Acts II and III

## Cast

Nora Helmer	Maureen Gokhale
Torvald Helmer	Michael Brooksbank
Mrs Linde	Trudy Stewart
Krogstad	David Mallinson
Dr Rank	Edwin Barraclough
Anne-Marie	Pam Wilson
Helene	Marie Lindley

## Crew

Production Manager	Christine Wilson
Stage Manager	Martyn Drake
Set construction	Martyn Drake & Team
Props	Doreen Parker & Sarah Oldknow
Prompt	June Stevenson
Costume	Maggie Rhodes & Team
Lighting	Peter Waddicor
Sound Operation	Adrian O'Reilly
Front of House Manager	Joyce King
Box Office	Christine Wilson

Directed by Gwyneth Hadley

Piano on loan from **The Piano Shop**  
specialists in upright and grand pianos with decorative and  
antique cabinets.  
New, modern and traditional pianos available.  
Showroom at 39 Holbeck Lane, Leeds LS11 9UL (nr Readmans)  
**Telephone 0113 244 3685**

*Thank you*  
Paper for Leeds Arts Centre programmes supplied by:  
**James McNaughton Paper Group**



# HENRIK IBSEN

Born in 1828 to a prosperous Norwegian merchant family, Ibsen's childhood was marred by his father's bankruptcy. At 15 he became assistant to an apothecary - stealing time away from his work to educate himself for university.

Ibsen began to write plays at the age of 21, and was drawn into the theatre - a career initially full of ups and downs. A change of fortune enabled Ibsen to move with his family to Italy in 1864. A year later, he published *Brand* which won him international acclaim. Further play-writing success followed and *A Doll's House* was published in 1879.

Henrik Ibsen is often considered the father of modern drama. Before his time, plays were intended merely to entertain. Characters were plainly 'hero' or 'villain' and made their motivations and thoughts plain to the audience.

Ibsen recognised that people seldom understand their own motivations enough to express them to themselves, let alone others. He was concerned with psychological realism and dealt with the social and political issues of the day. Many of his plays concern self-discovery and the slow, sometimes painful growth towards personal freedom.

*A Doll's House* is such a play - the most obvious journey of self-discovery being Nora's. To a lesser extent, Nils Krogstad, Kristine Linde and Dr Rank have their own journeys. Torvald Helmer's might well begin after the final curtain . . .

## Civic Theatre

Theatre Manager - *Steven Cartwright*

Assistant Manager - *Vivien Simpson*

Chief Technician and Lighting - *Peter Waddicor*

Technicians - *Sandy Clark, Tony McManus, Shaun Woodhouse*

Catering for Crown Point Foods - *Shirley Tarran*

Box Office - *Helen Richmond, Shirley Shortall, Syliva Gooding*

In accordance with the requirements of the Licensing Sub-Committee of Leeds City Council:

- a The public may leave at the end of the performance by all exits and entrance doors and such doors must at all times be open
- b All gangways, passages and staircases must be kept entirely free from chairs or any other obstructions.
- c Persons shall not be permitted to stand in any of the intersecting gangways, or stand in any other unseated space in the auditorium, unless standing in such place has been specially allowed by the Licensing Committee. A notice is exhibited in that part of the auditorium in which standing has been sanctioned.
- d The safety curtain must be lowered and raised once immediately before the commencement of each performance to show that it is in proper working order.

# Leeds Arts Centre

Leeds Arts Centre was formed in 1945 as an amateur society. Our members come from all walks of life and include people who have worked in the theatre, others who hope to make a career on the stage and quite a number who are very happy to remain amateurs. We're a friendly company, working together to maintain the high standards for which our productions are known. First and foremost, we aim to enjoy ourselves!

Each year we produce plays at the Civic Theatre - but that's not all. . .

Our **Green Room** group devise plays, readings, quizzes and other entertainment to keep members not involved in current productions busy and to develop our skills in acting, directing and production.

Our **Fine Arts** group meets regularly throughout the year for life drawing, sketching and painting.

Last, but not least, we enjoy a variety of **social activities**, including theatre visits, outings, parties etc.

## We welcome new members . . .

. . . so if you're interested in:

- acting, directing, producing,
- set building & painting
- making and repairing costumes
- back stage and front of house
- or publicity and promotion

. . . why not have a chat with one of our members front of house this evening - or in the bar after the show. You can also write, with contact telephone number for further information to:

The Secretary, Leeds Arts Centre  
c/o Civic Theatre, Cookridge Street, Leeds LS2 8BH

.....  
FORTHCOMING PRODUCTIONS  
.....

Sue Townsend's  
**BAZAAR and Rummage**  
Directed by Tony Nelson

Sue Townsend, acclaimed author of the "Adrian Mole" diaries and numerous plays has written a marvellous satire on our 'caring' times.

A neurotic do-gooder and a trainee social worker persuade three agoraphobics from the safety of their homes to run a local church jumble sale.

Sharply observed, funny and real - this very human comedy drama might leave you wondering who needs whom most, the 'carers' or the 'cared for'

Wednesday 21<sup>st</sup> - Saturday 25<sup>th</sup> April

---

**Teachers** john godber  
directed by  
Malcolm Brown

Fast-moving, inventive and highly entertaining, *Teachers* vigorously evokes life at a modern comprehensive. The format is an end of term play, charting a drama teacher's progress through two terms of battling classes, cynical colleagues and obstructive caretakers until he departs for the greener grass of a private school. Running the gamut of emotions - the play climaxes with a poignant scene which gives an edge to the robust comedy. *Teachers* is loud, cheerful, exuberant and pointedly political. Great fun.

Coming to the Theatre in October 1999

- 
- The next Guild production at the Civic Theatre is   
*Beyond Reasonable Doubt*
- Jeffrey Archer's gripping court-room drama presented by   
*Cosmopolitan Players*   
25 - 27 February at 7.30pm
- 

**Friends of Leeds Civic Theatre**  
if you'd like to support this theatre - why not join the Friends?  
*Application forms available in the foyer*