

# Civic **THEATRE**

LEEDS LEISURE SERVICES

## LEEDS ARTS CENTRE

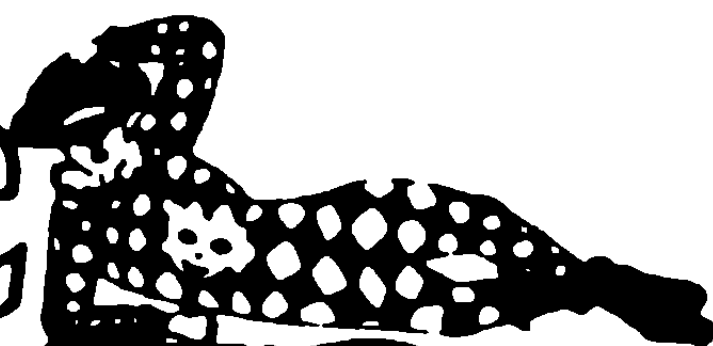


### **THE DUCHESS OF MALFI**

by John Webster  
Directed by Malcolm Brown

Civic Theatre, Cookridge Street, Leeds LS2 8BH  
Box Office 462453 (9am to 5pm) 455505 (7pm to 8pm) Management 456343 / 434389  
Facilities for the Disabled

# Civic THEATRE



# SPRING

## Season 1984

### LEEDS LEISURE SERVICES

WEDNESDAY 1st to SATURDAY 4th FEBRUARY at 7.30 p.m.  
 Proscenium Players **AWAKE AND SING** by Clifford Odets  
 £1.50 Child/OAP £1.25

MONDAY 6th to SATURDAY 11th FEBRUARY at 7.30 p.m.  
 City of Leeds **FESTIVAL OF JAZZ AND POPULAR MUSIC** A different concert  
 College of Music £2.50 Student/OAP £1.25 every night

TUESDAY 14th to SATURDAY 18th FEBRUARY at 7.30 p.m.  
 Leeds Arts Centre **THE DUCHESS OF MALFI** by John Webster  
 £2 Child/OAP £1.50

WEDNESDAY 22nd to SATURDAY 25th FEBRUARY at 7.30 p.m.  
 William Sheafield **THE MURDER OF MARIA MARTIN or THE RED BARN** by Brian J. Burton  
 £1.50 Child/OAP 75p. Two for the price of one on opening night

WEDNESDAY 29th FEBRUARY to SATURDAY 10th MARCH at 7.30 p.m.  
 Leeds Gilbert & Sullivan Society **IOLANTHE** by Gilbert and Sullivan  
 £2.50, £2.25, £1.75. Child OAP £1.75, £1.50, £1.25 (No reductions for OAP's on Fridays and Saturdays)

TUESDAY 13th to SATURDAY 17th MARCH at 7.30 p.m.  
 Leeds Art Theatre **SHE STOOPS TO CONQUER** by Oliver Goldsmith  
 £1.50 Child OAP £1. Party concessions. Two for the price of one on opening night.

TUESDAY 20th to SATURDAY 31st MARCH at 6.30 p.m. Saturday Matinees at 2 p.m.  
 Leeds Children's Theatre **PINOCCHIO** by John Morley  
 £1.50 Child/OAP 70p

WEDNESDAY 4th to SATURDAY 7th APRIL at 7.30 p.m.  
 Leeds Youth Players **TAKE SEVEN** A Revue  
 £1.20 Child/OAP 60p

WEDNESDAY 11th to SATURDAY 14th APRIL at 7.30 p.m.  
 Cosmopolitan Players **MAN ALIVE** by John Dighton  
 £1.75 Child/OAP £1.25

TUESDAY 17th to SATURDAY 21st APRIL at 7.30 p.m.  
 Leeds Arts Centre **TAKING STEPS** by Alan Ayckbourn  
 £2 Child/OAP £1.50

MONDAY 30th APRIL to SATURDAY 5th MAY at 7.00 p.m.  
 West Riding Opera **OBERON** by Weber  
 £3.50, £3, £2.50, £2. Reductions for Children and OAP's Monday to Thursday only

**SPECIAL ATTRACTIONS**  
 SUNDAY 29th JANUARY - TWO PERFORMANCES AT 5 p.m. AND 7.45 p.m.  
 Television's popular quiz show **MR. AND MRS.** live on stage  
 Starring Derek Batey plus supporting show  
 £2.50 & £2. Child/OAP £2 & £1.50  
**SPECIAL OFFERS:** 5 p.m. show - 2 free seats for every 10 booked; 7.45 p.m. show - 1 free seat for every 10 booked.  
 Special tea for parties if required at £1.50 per head

SUNDAY 25th MARCH at 7.30 p.m.  
 From the Steppes of the Ukraine - **THE BLACK SEA COSSACKS** music, song and dance for everyone  
 An unique production direct from the international concert stage.  
 The only authentic Cossack Company performing in the Western World today.  
 £2.50 Child OAP £1.50. Parties of 10 or more 1 free seat for every 10 booked.

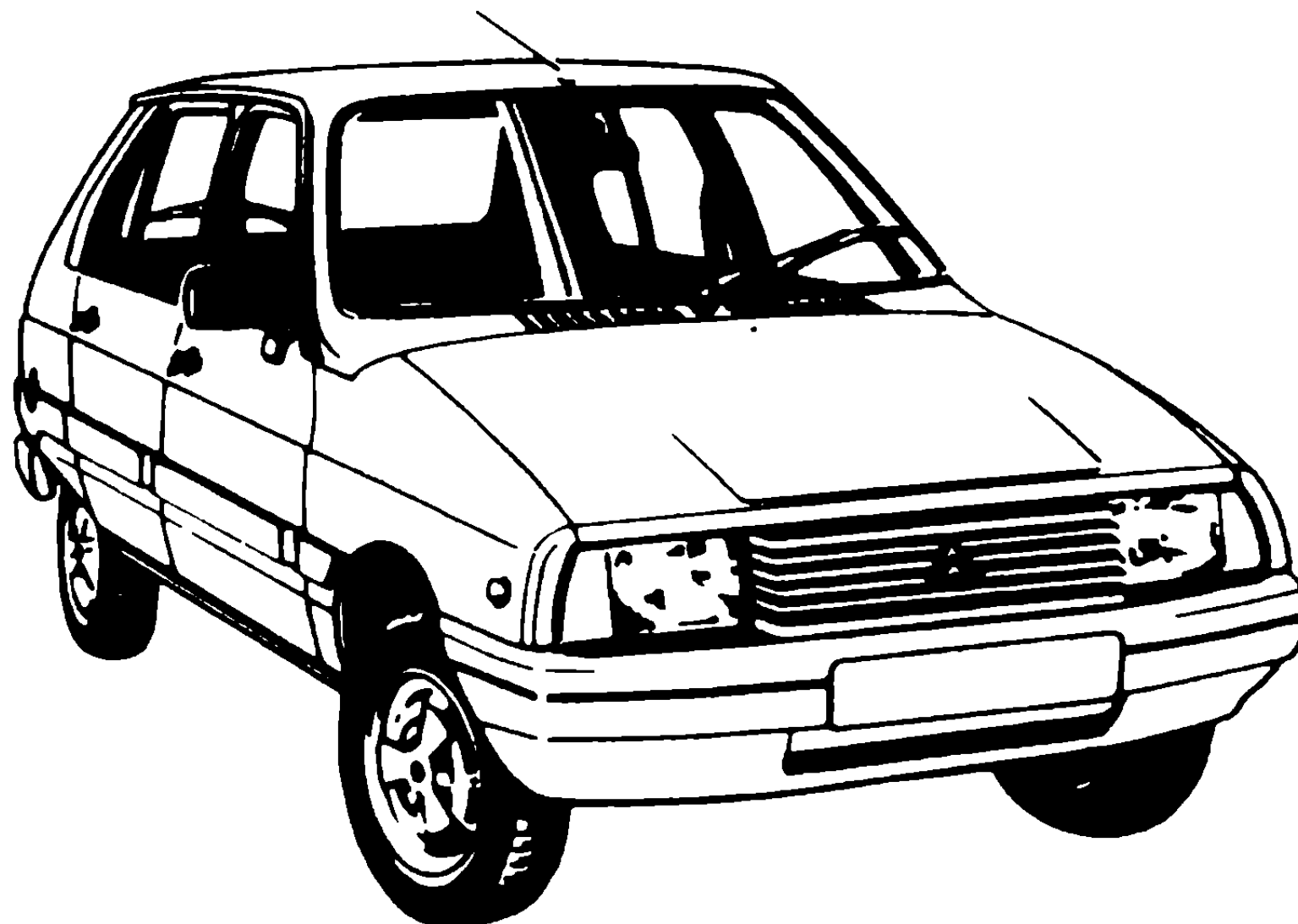
SUNDAY 8th APRIL at 7.00 p.m.  
 JUNE BURNS SCHOOL OF DANCING ... **VARIETY SHOW**  
 £1.75 Child OAP £1

ALL SEATS BOOKABLE AT THE TOURIST INFORMATION CENTRE CALVERLEY STREET LEEDS Tel 462453

**Civic Theatre, Cookridge Street, Leeds LS2 8BH**  
**Box Office 462453 (9am to 5pm) 455505 (7pm to 8pm) Management 456343/434389**  
**Facilities for the Disabled**

# For a Good Deal Better

Peugeot  
Talbot  
Citroen  
Sales  
Service  
Parts



## COX OF LEEDS

Regent Street, Leeds 2

Telephone Leeds (0532) 431914



## Profile

Says

**TRY US LAST!!**

WE WILL BEAT ANY GENUINE PRICE IN THE MONTHS OF DEC & JAN (On UPVC Windows, Doors & Patios, that will not rot, pit, fade, chip, warp and never need painting) — providing it complies with all fire safety regulations and conforms to the British Plastics Federation.

**AS ALL OUR PRODUCTS DO!!**  
(If you tried us first you wouldn't have to do all this!!)

## Window Profile

1, TAVERNERS WALK IND. EST. SHEEPSCAR GROVE,  
LEEDS LS7 1AH. TELEPHONE 457472

SHOWROOM OPEN 7 DAYS  
SUNDAY VIEWING 10 A.M.-4 P.M. MON.-SAT.

# Manfreds

## Italian restaurant

54 Wellington Street, Leeds 1

Tel: (0532) 436438

(HALF MINUTE FROM CITY SQUARE)

Manfred cordially invites you to celebrate in style after the show in cosy intimate surroundings, with courteous friendly service, and an extensive choice of freshly prepared food.

With your pleasure in mind.

**LUNCH**

12.00 - 2.00 Mon - Fri

**EVENINGS**

7.00 - 11.00 Mon - Sat

Open bank holiday monday, evenings only

RESERVATIONS ADVISABLE

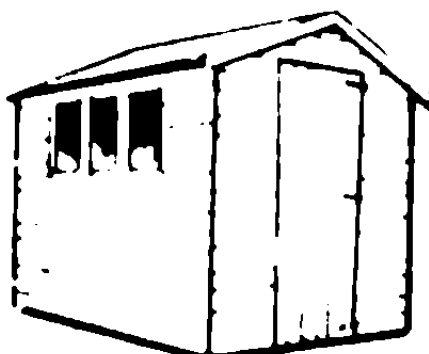
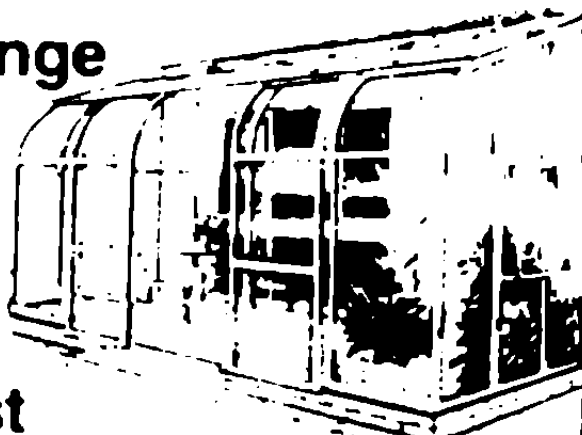
# VISIT..

## NGS for Conservatories, Porches and Sheds

The biggest display in the North.

### Conservatories – Superb Range

Choose from most leading makes  
Home surveys without obligation.  
Skilled installation, planning and advice.



### Sheds – High quality, low cost

Immediate FREE delivery and erection – with free floor. Our quality is guaranteed – our prices never undersold.



### Porches – Choice of sizes

High Quality glass and aluminium construction with life long appeal. Same day delivery and installation by experts.



NORTHERN GREENHOUSE SPECIALISTS

Saville Bros. Garden Centre  
Selby Road  
Garforth. Tel (0532) 861223

## It'll show you what a drag your present car is.

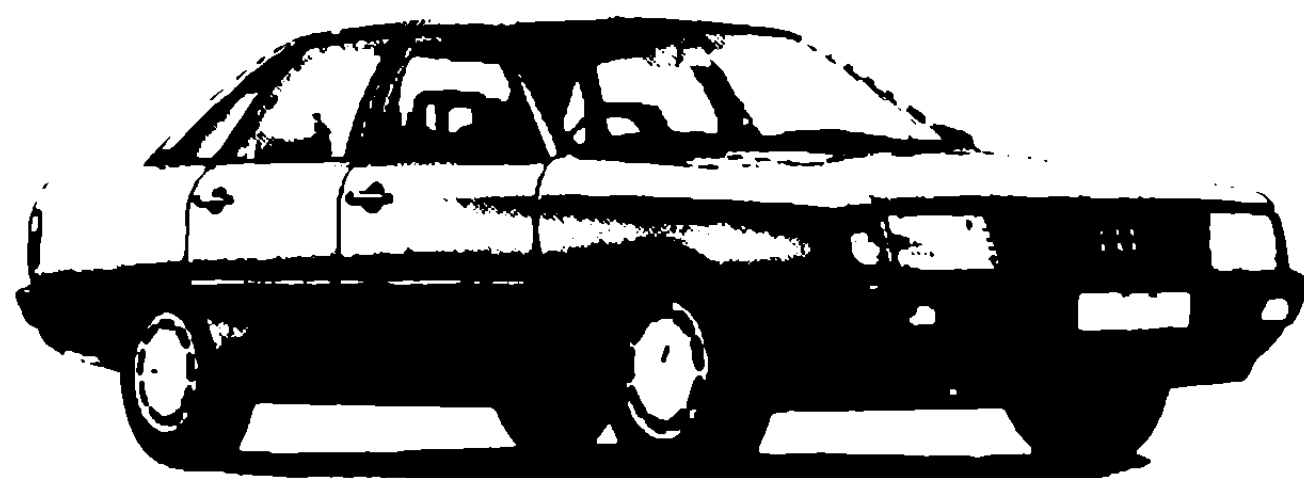
Imagine driving around with a parachute clamped to your rear bumper and you'll get an idea of what aerodynamic drag feels like.

Quite simply, the less a car has holding it back the less fuel it needs to drive it forward. And the better its performance.

Imagine driving around with 30% less parachute and you'll get an idea of what the new Audi 100 feels like.

Audi

While the drag factor for the average car is Cd0.43, the Audi 100 clocks up a mere Cd0.30.



—TEST DRIVE THE NEW AUDI 100  
THE MOST AERODYNAMIC PRODUCTION CAR IN THE WORLD

# Trust

Trust Motors  
(Leeds) Ltd.  
Gelderd Road, Leeds 12  
Tel: Leeds 633431

VAG Your Audi Volkswagen Dealer.

## WEEKEND BREAKS

TAKING IN GREAT HIT SHOWS



FROM £58.00 – 3 DAYS

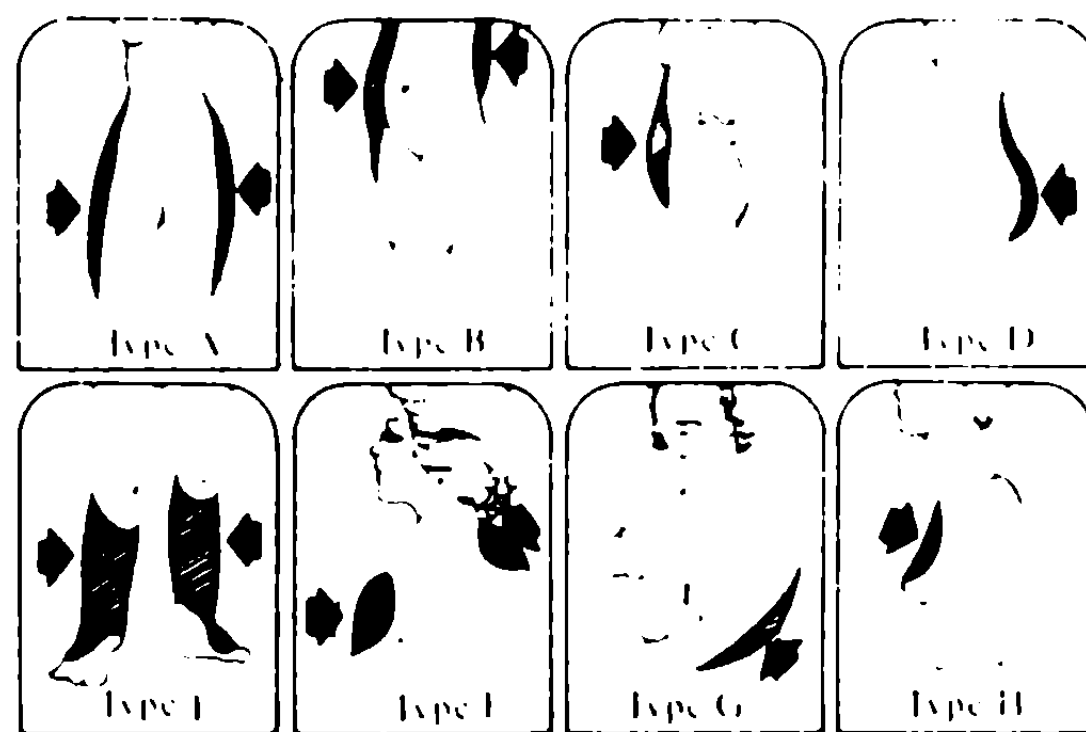
### INCLUDES:

- 2 nights accommodation in twin bedded room with private facilities and TV and full English Breakfast
- One a la carte dinner or lunch (3 courses)
- Sat theatre ticket from the selection offered each weekend
- Wallace Arnold luxury coach with video and toilet
- Sat a.m. tour of London
- Return from London Sunday p.m.
- The Prince of Wales on all departures. Deposit £10.00 at time of booking. Balance 6 weeks before departure. Theatre tickets subject to availability at time of booking.

# Wallace Arnold

53 Corn Exchange, Leeds 1. Tel (0532) 434691

## Women's Figure Problems



Take a critical look at yourself in the mirror. Which type do you belong to? TYPE A Fat cushions on upper thighs TYPE B Heavy waistline TYPE C Ugly fat on tummy TYPE D Deformed bottom TYPE E Thick ankles TYPE F Heavy neck and shoulders TYPE G Flabby upper arms TYPE H Sagging bust. You will soon lose all your inhibitions.

**WE MAKE YOU THINNER GUARANTEED!**

**OR YOUR MONEY BACK**

You don't simply become thinner, your figure is shaped according to your wishes! Take advantage of our free figure analysis.

# Swiss Figure Clinics

3rd Floor, Duncan House, 14, Duncan Street, Leeds 1. Telephone 435300  
Open Monday-Thursday, 10 a.m.-8 p.m.; Fridays 10 a.m.-4 p.m.  
Any patient of Swiss Figure Clinics U.K. is always welcome at any of our clinics in Switzerland, Zurich, Geneva, Lausanne, Bern, Lucerne, etc.

# LEEDS ARTS CENTRE



## **THE DUCHESS OF MALFI**

by John Webster  
Directed by Malcolm Brown



## **HISTORICAL BACKGROUND TO “THE DUCHESS OF MALFI”**

“The Duchess of Malfi” is based on fact. The actual Duchess was born in 1477 and married in 1490 to the Duke of Amalfi, who died a few years later.

In 1504 Antonio Bologna entered her service and she married him in secret with her waiting woman as sole witness to the ceremony. The marriage was concealed for three years but the news finally reached her brothers who hounded the lovers throughout the whole country.

The Duchess was eventually ambushed and placed under house arrest at her palace in Amalfi; she was never seen again. Antonio was later assassinated by a Lombard Captain, Daniel de Bosolo.

Webster took the main outline of the story from William Pointer’s “Second Tome of the Palace of Pleasure” (1567), and the play was first performed in 1613.

Webster’s sympathetic treatment of the Duchess and Antonio, the central role of Bosola, and the eventual fate of the Aragonian brothers and the Duchess are all original additions to the story.

Very little is known about John Webster, but among his contemporaries he was held in high esteem. Ford wrote of him:

*“Crowne him a Poet, whom nor Rome nor Greece  
Transcend in all theirs for a master-peece”.*

# THE DUCHESS OF MALFI

## THE HOUSE OF ARAGON

THE CARDINAL, brother to Ferdinand and the Duchess	Edwin Barracclough
FERDINAND, Duke of Calabria	David Mallinson
THE DUCHESS OF MALFI	Gwyneth Hadley

twins

## THE HOUSEHOLD OF THE DUCHESS

ANTONIA BOLOGNA, Steward	Les Wormald
DANIEL DE BOSOLA, appointed Provisor of Horse	Stuart Mitchell
CARIOLA, waiting woman	Denise Swift
CHILDREN to the Duchess and Antonio	Clara Hadley
	Thomas Hadley

## THE COURT

DELIO, friend to Antonio	David Jarrett
SILVIO	Nicolas Money
CASTRUCCIO	George Teale
JULIA, wife to Castruccio and mistress to the Cardinal	Shirley Hamer
RODERIGO	Martyn Drake
DOCTOR	Dennis Stevenson

OFFICERS, ATTENDANTS, MADFOLK, EXECUTIONERS      Members of the  
cast and Monica Brown, Julie Mitchell,  
Jean Blundell, Kathy Wormald, Gill Thresh

DIRECTED AND DESIGNED BY MALCOLM BROWN

STAGE MANAGER	George Westmoreland
ASSISTANT STAGE MANAGER	David Scott
PROPERTIES	Doreen Parker
PROMPT	Miriam Fletcher/Denise Forton
LIGHTING	Laurie Ball
SOUND	Gill Dowse
MUSIC	Gill Thresh
CHOREOGRAPHY	Jean Blundell
COSTUMES	Julie Mitchell
	Elsie Bell
FRONT OF HOUSE MANAGER	Christine Wilson

## **LEEDS ARTS CENTRE – FUTURE PRODUCTIONS**

**“Taking Steps” by Alan Ayckbourn.  
Directed by Joyce King.  
April 17 – 21. Tickets £2 and £1.50.**

**“The Canterbury Tales” a musical dramatisation of  
the famous tales of Geoffrey Chaucer –  
directed by Malcolm Brown.  
June 5 – 9. Tickets £2.50 and £2.**

**Leeds Arts Centre is always happy to welcome new  
members. Anyone wishing to join should write to:  
The Secretary, Leeds Arts Centre, Stansfeld Chambers,  
Great George Street, Leeds.**



## Pick a Winner Every Time from Kitchens

fantastic musical selection

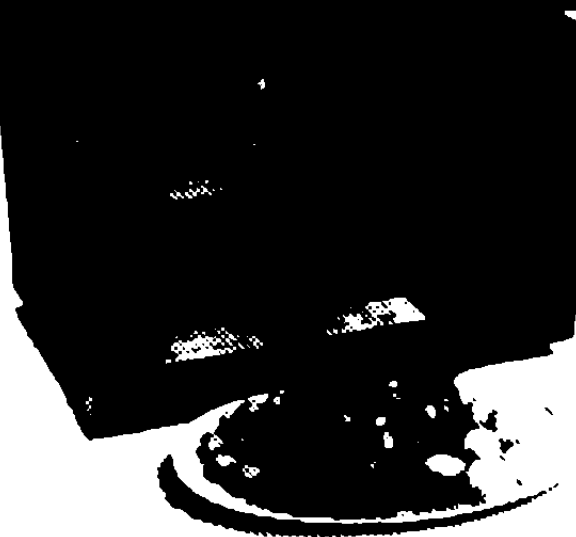
- Pianos ● Home Organs
- Keyboards
- Professional Instruments
- Group Gear
- Marching Band Instruments
- Sheet Music

Best Service, Best Value . . .  
the Everything in Music Store.

27-31 Queen Victoria Street, LEEDS LS1 6BD  
(Tel. Leeds 446341)

**Kitchens**  
EST. 1875 THE MUSIC PEOPLE

## IT TAKES A GENIUS TO COOK STRAIGHT FROM THE FREEZER.



What do you call an oven that can defrost and cook in a single operation?

Or can be set to switch itself on up to ten hours in advance, then go

from cook to simmer automatically?

An oven that lets you do the cooking or does the cooking all by itself?

We call it the Genius. And it's just one of the outstanding range of microwave ovens from National.

For a personal introduction, just call in at the address below.

The Genius from

**National**

### MICRO - OVENS

For largest range and most competitive prices  
Both Catering and Domestic Ovens

234 EASTERLEY ROAD, LEEDS 8

2 miles from City Centre, near A581, off  
Wetherby Road, opposite Oakwood Baptist  
Church

TEL. LEEDS 402745

## A.D.L. SUPPLIERS OF AIDS FOR THE DISABLED

Sole distributors for ELSWICK 'ENVOY' (the car you drive from your wheelchair)

Suppliers of Powered and Manual Wheelchairs from all major manufacturers.

Stair Lifts, Possum control, Car conversions, Wheelchair hire & repair. Visit our showroom and inspect the above plus a wide range of small aids for arthritic sufferers.

### AIDS FOR DAILY LIVING



UNITS 14-15 WOODSIDE MILLS LOW LANE HORSFORTH LEEDS LS18 4RU  
TEL. LEEDS (0532) 588888

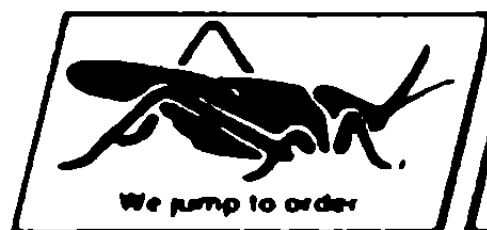


**With best wishes  
for a successful show**

# **J. PULLAN and SONS LTD.**

**Building Contractors  
LEEDS**

*YOUR LOCAL BUILDER SINCE 1885*



**DALTONA**  
SHELVING • INTER SIGNS • STORAGE HANDLING EQUIPMENT

**INTERSIGNS - The sign letters you can fix yourself -**  
Three dimensional letters moulded out of tough, durable acrylic based material. Range of styles and sizes. Immediate delivery ex-stock. Also CUT OUT PERSPEX LETTERS in many different styles. FREE ADVICE, DELIVERY AND FITTING SERVICE.

**DISTRIBUTORS FOR:**

TEBRAX Adjustable Aluminium Shelving  
SPUR Adjustable Steel Shelving  
STRUT Adjustable Steel Shelving  
ERECTO & DEXION Slotted Angle & Tube  
(Supplied and Erected)  
SYSTEM 2000 Display Fittings  
STRONGBEAM Quality Brackets  
MYERS Pegboard Fittings  
CONTI-BOARD Melamine Shelving

**ALL PRODUCTS EX-STOCK AND  
ON VIEW AT OUR SHOWROOMS**

**TEL: LEEDS 504878 / 501470**  
*Unit 5, Moorfield Industrial Estate, Yeadon, Leeds LS19 7BN*

## **Act 1.**

Leap into the farce of a flashy advertising agency giving a mediocre service for extortionate prices.

## **Act 2.**

Enter Portfolio and work happily ever after.



**THE PORTFOLIO ADVERTISING GROUP**

241-253 New Road Side, Horsforth,  
Leeds LS18 4DR. Tel: (0532) 582353/584662.

# Civic THEATRE

LEEDS LEISURE SERVICES



## Black Sea Cossacks

**FROM THE STEPPES OF THE UKRAINE - MUSIC, SONG AND DANCE  
FOR EVERYONE**

**UNIQUE PRODUCTION DIRECT FROM THE INTERNATIONAL CONCERT STAGE  
THE ONLY AUTHENTIC COSSACK COMPANY  
PERFORMING IN THE WESTERN WORLD TODAY**

**SUNDAY 25th MARCH at 7.30 p.m.**

**TICKETS: £2.50 Child/OAP £1.50 - Parties of 10 or more: 1 FREE Seat in every Ten**

**ALL SEATS BOOKABLE AT THE TOURIST INFORMATION CENTRE · CALVERLEY STREET · LEEDS. Tel: 462453**

**Civic Theatre, Cookridge Street, Leeds LS2 8BH  
Box Office 462453 (9am to 5pm) 455505 (7pm to 8pm) Management 456343/434389  
Facilities for the Disabled**

## **LEEDS CIVIC THEATRE**

Cookridge Street, Leeds LS2 8BH

Management 456343 - 434389

Box Office: 462453 (9 am to 5 pm) 455505 (7 pm to 8 pm)

GENERAL MANAGER & LICENSEE	: BRIAN GODDARD
ASSISTANT MANAGER/BAR MANAGER	: RICHARD PALMER
RESIDENT STAGE MANAGER	: ANTHONY McMANUS
DEPUTY STAGE MANAGER	: PAULINE MOWER
THEATRE ELECTRICIAN	: PETER WADDICOR

We hope you have enjoyed your visit to our theatre. If you would like to receive regular information about the theatre, please write to "The Mailing List", Leeds Civic Theatre, Cookridge Street, Leeds LS2 8BH. If you are interested in becoming a Patron or Sponsor for this theatre, please write to the General Manager, at the above address.

### **Disabled Facilities**

Leeds Civic Theatre can accommodate approximately 20 wheelchairs, if booked well in advance. Please ring 462453 for full details.

The Leeds Civic Theatre shares the Institute Buildings with the Leeds College of Music. This may mean that occasionally performances may be subject to slight acoustic problems. Whilst both parties do everything within their power to keep this to a minimum, we cannot prevent it completely. We apologise, therefore, for any inconvenience which may be caused.

In accordance with the requirements of the Licensing Sub-Committee of Leeds City Council.

- (a) The public may leave at the end of the performance by all exit and entrance doors, and such doors must at that time be open.
- (b) All gangways, passages and staircases must be kept entirely free from chairs or any other obstruction.
- (c) Persons shall not be permitted to stand or sit in any of the intersecting gangways, or stand in any unseated space in the auditorium, unless standing in such a space as has been specially allowed by the Licensing Committee. A notice is exhibited in that part of the auditorium in which standing has been sanctioned.
- (d) The safety curtain must be lowered and raised once immediately before the commencement of each performance so as to ensure it being in proper working order.

**PLEASE NOTE: THE TAKING OF PHOTOGRAPHS DURING  
PERFORMANCES IS PROHIBITED  
STRICTLY NO SMOKING IN THE AUDITORIUM**

## **BAR SERVICE – THE INTERVAL**

To enable you to obtain your drinks efficiently and promptly, simply fill in the interval drinks order form (obtainable from the bar) and hand it into the bar before the performance. Your drinks will be ready for collection at the start of the interval. A wide selection of beers, wines, spirits, soft drinks, coffee, biscuits and confectionery is available. Save time – **ORDER IN ADVANCE**