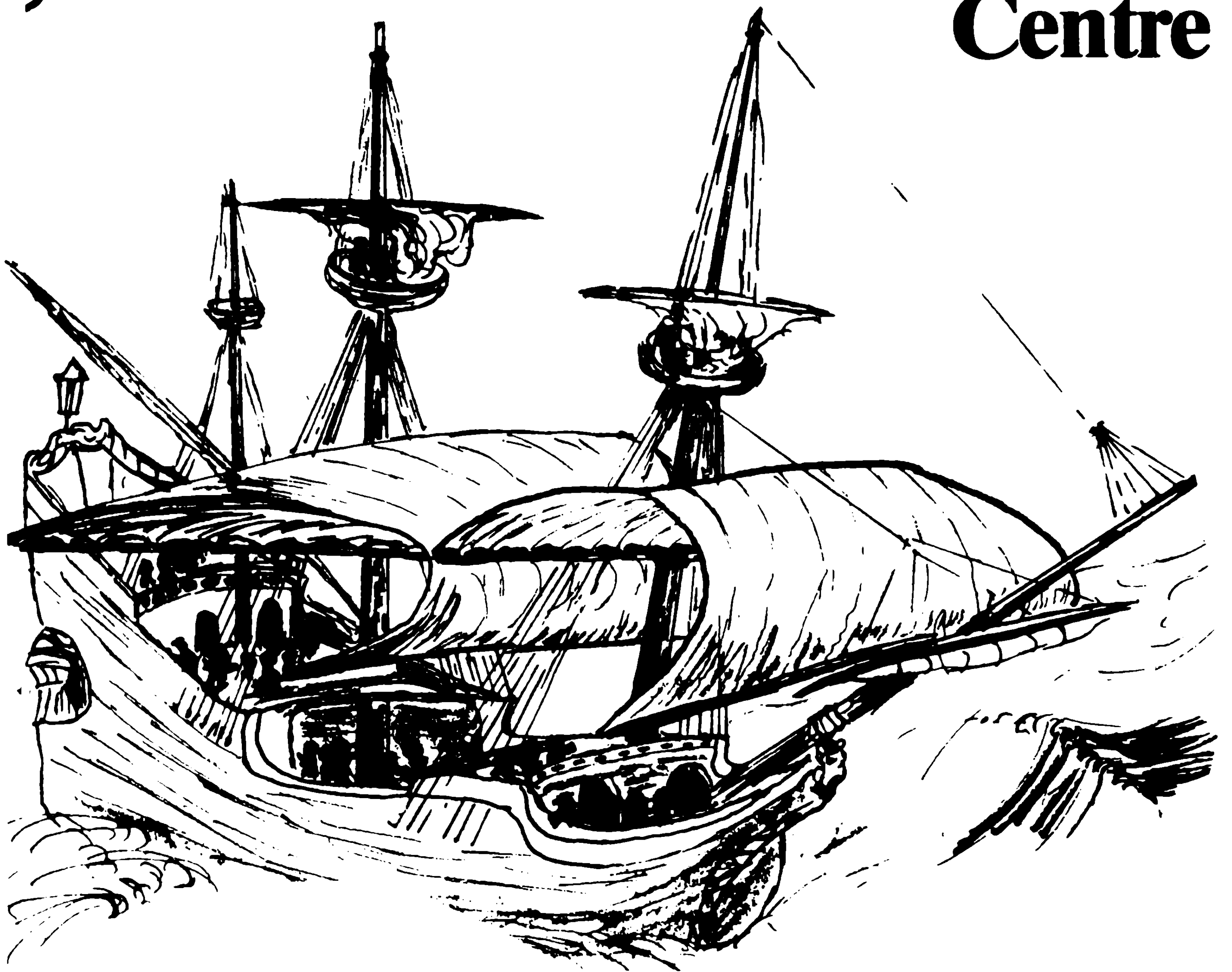


Civic THEATRE

LEEDS LEISURE SERVICES

William Shakespeare

**Leeds Arts
Centre**



**THE
TEMPEST**

**DIRECTED BY
TONY NELSON**

Civic Theatre, Cookridge Street, Leeds LS2 8BH

Box Office 462453 (9am to 5pm) 455505 (7pm to 8pm) Management 456343/434389

Facilities for the Disabled &

AUTUMN Season 1983

TUESDAY 20th TO SATURDAY 24th SEPTEMBER AT 7.30 PM
SATURDAY MATINEE AT 2.30 PM

Leeds Civic Arts Guild **DIVORCE ME DARLING** **By Sandy Wilson**
1983 GALA CHARITY SHOW - THE SEQUEL TO "THE BOYFRIEND"
Adult £2.50 and £1.75 Child/OAP £1.75 and £1
* Two For The Price of One on Opening Night *

TUESDAY 27th SEPTEMBER TO SATURDAY 1st OCTOBER AT 7.30 PM

LIDOS **OUTSIDE EDGE** **By Richard Harris**
Adult £1.50 Child/OAP £1
* Two For The Price of One on Opening Night *

TUESDAY 4th TO SATURDAY 8th OCTOBER AT 7 PM

Leeds Arts Centre **THE TEMPEST** **By William Shakespeare**
Adult £1.75 Child/OAP £1.25

TUESDAY 11th TO SATURDAY 15th OCTOBER AT 7.30 PM

Leeds Art Theatre **UNDER MILK WOOD** **By Dylan Thomas**
Adult £1.50 Child/OAP £1
* Two For The Price of One on Opening Night *

TUESDAY 18th TO SATURDAY 22nd OCTOBER AT 7 PM
SATURDAY MATINEE AT 2 PM

Leeds Light Opera Group **WALTZES FROM VIENNA** **By Johann Strauss**
(By arrangement with Joseph Weinberger Ltd.)
Adult £2.50 Child/OAP £1.75

SUNDAY 23rd OCTOBER AT 7 PM

White Rose Barbershop Singers **A BARBERSHOP TIME OF YOUR LIFE**
Adult £2 and £1.50 Child/OAP £1

WEDNESDAY 26th TO SATURDAY 29th OCTOBER AT 7.30 PM

Proscenium Players **BLITHE SPIRIT** **By Noel Coward**
Adult £1.50 Child/OAP £1.25

☆☆☆☆☆

ADVANCE NOTICE * PANTOMIMES 1984

WEDNESDAY 4th TO SATURDAY 14th JANUARY AT 7 PM
SATURDAY MATINEE AT 2.30 PM

Leeds Art Theatre **JACK AND THE BEANSTALK**
Adult £1.50 Child/OAP £1
* Two For The Price of One on Opening Night and Monday *
SPECIAL PARTY CONCESSIONS

WEDNESDAY 18th TO SATURDAY 28th JANUARY AT 7 PM
SATURDAY MATINEE AT 2 PM

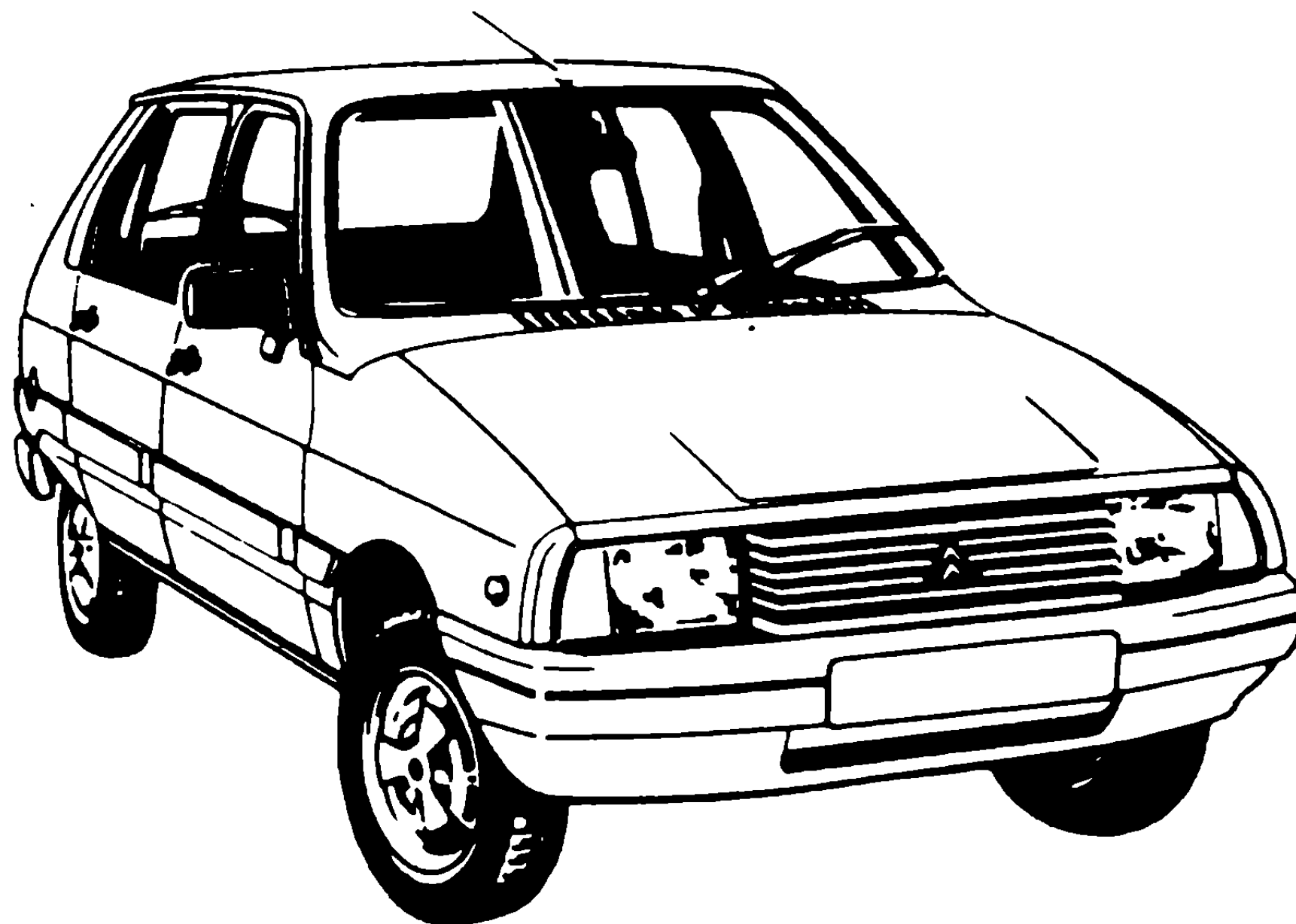
LIDOS **LITTLE MISS MUFFET**
Adult £2.50 & £2 Child/OAP £1.25 & £1
* Two For The Price of One on Opening Night *

ALL PRODUCTIONS BOOKABLE AT THE TOURIST INFORMATION CENTRE,

Calverley Street, Leeds. Tel: 462453

For a Good Deal Better

Peugeot
Talbot
Citroen
Sales
Service
Parts



COX OF LEEDS



Regent Street, Leeds 2

Telephone Leeds (0532) 431914

Window Profile Ltd.

Says
TRY US LAST!!

WE WILL BEAT ANY GENUINE PRICE IN THE MONTHS OF OCT & NOV (On UPVC Windows, Doors & Patios, that will not rot, pit, fade, chip, warp and never need painting) – providing it complies with all fire safety regulations and conforms to the British Plastics Federation.

AS ALL OUR PRODUCTS DO!!
(If you tried us first you wouldn't have to do all this!!)

Window Profile

1, TAVERNERS WALK IND. EST. SHEEPSCAR GROVE,
LEEDS LS7 1AH. TELEPHONE 457472
SHOWROOM OPEN 7 DAYS
SUNDAY VIEWING 10 A.M.-4 P.M. MON.-SAT.

Manfreds

Italian restaurant

54 Wellington Street, Leeds 1

Tel: (0532) 436438

(HALF MINUTE FROM CITY SQUARE)

Manfred cordially invites you to celebrate in style after the show in cosy intimate surroundings, with courteous friendly service, and an extensive choice of freshly prepared food.

With your pleasure in mind.

LUNCH

12.00 – 2.00 Mon – Fri

EVENINGS

7.00 – 11.00 Mon – Sat

Open bank holiday monday, evenings only

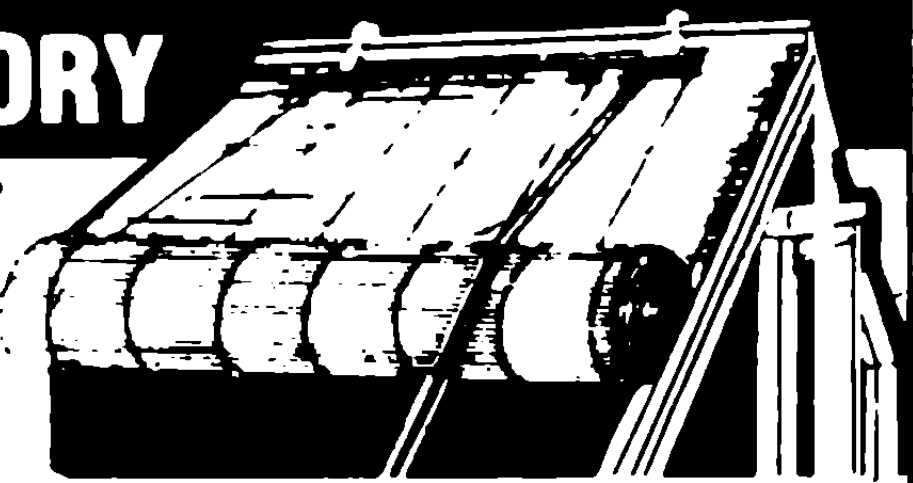
RESERVATIONS ADVISABLE

FREE with every FLORADA CONSERVATORY

Long-life exterior Sunblinds worth up to

£129.99

- CREAM COLOUR.
- EASY TO ADJUST.
- ROT & WEATHER PROOF



and remember!

Our **HUGE RANGE** of Conservatories are available with **SHATTERPROOF SAFETY GLASS**



FREE HOME SURVEYS without obligation

All at discount prices. Over 100 models to choose from. Skilled installation service.



Saville Bros. Garden Centre
Selby Road
Garforth. Tel (0532) 861223

It'll show you what a drag your present car is.

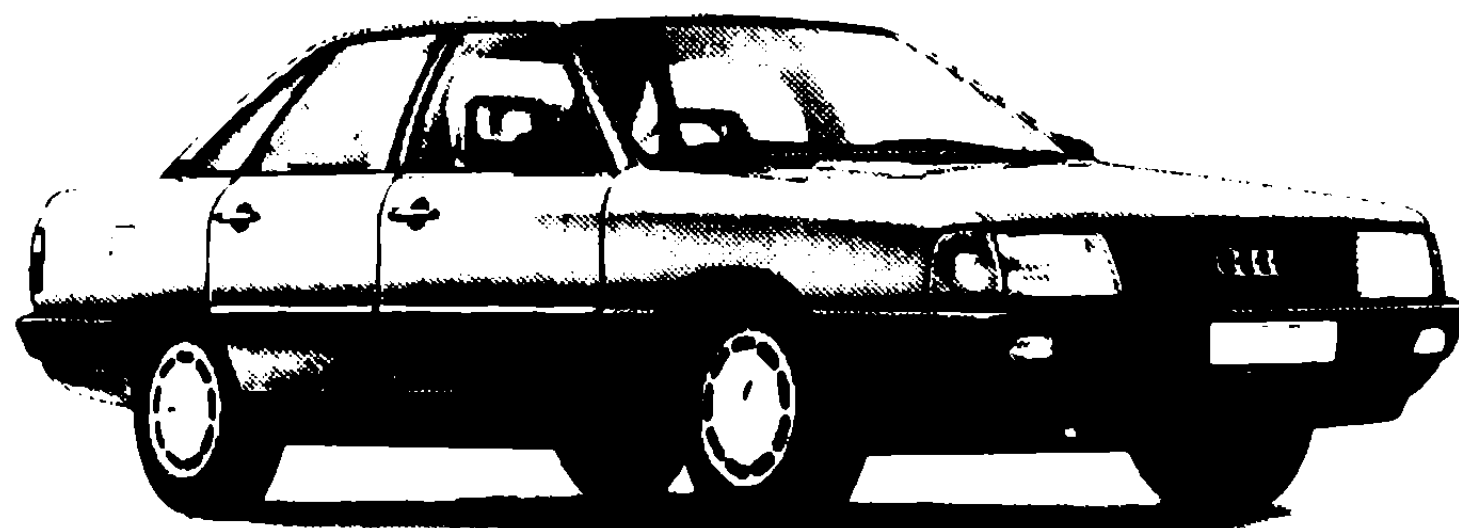
Imagine driving around with a parachute clamped to your rear bumper and you'll get an idea of what aerodynamic drag feels like.

Quite simply, the less a car has holding it back the less fuel it needs to drive it forward. And the better its performance.

Imagine driving around with 30% less parachute and you'll get an idea of what the new Audi 100 feels like.



While the drag factor for the average car is Cd 0.33, the Audi 100 clocks up a mere Cd 0.30.



—TEST DRIVE THE NEW AUDI 100.
THE MOST AERODYNAMIC PRODUCTION CAR IN THE WORLD—

Trust Motors (Leeds) Ltd.
Gelderd Road, Leeds 12
Tel: Leeds 633431

VAG Your Audi Volkswagen Dealer.

WEEKEND BREAKS

TAKING IN GREAT HIT SHOWS

Fiddler on the Roof

CATS

EVITA

**BUGSY ★
★Malone**

Singin' in the Rain

**Cliff ★
Richard**

FROM £58.00 – 3 DAYS

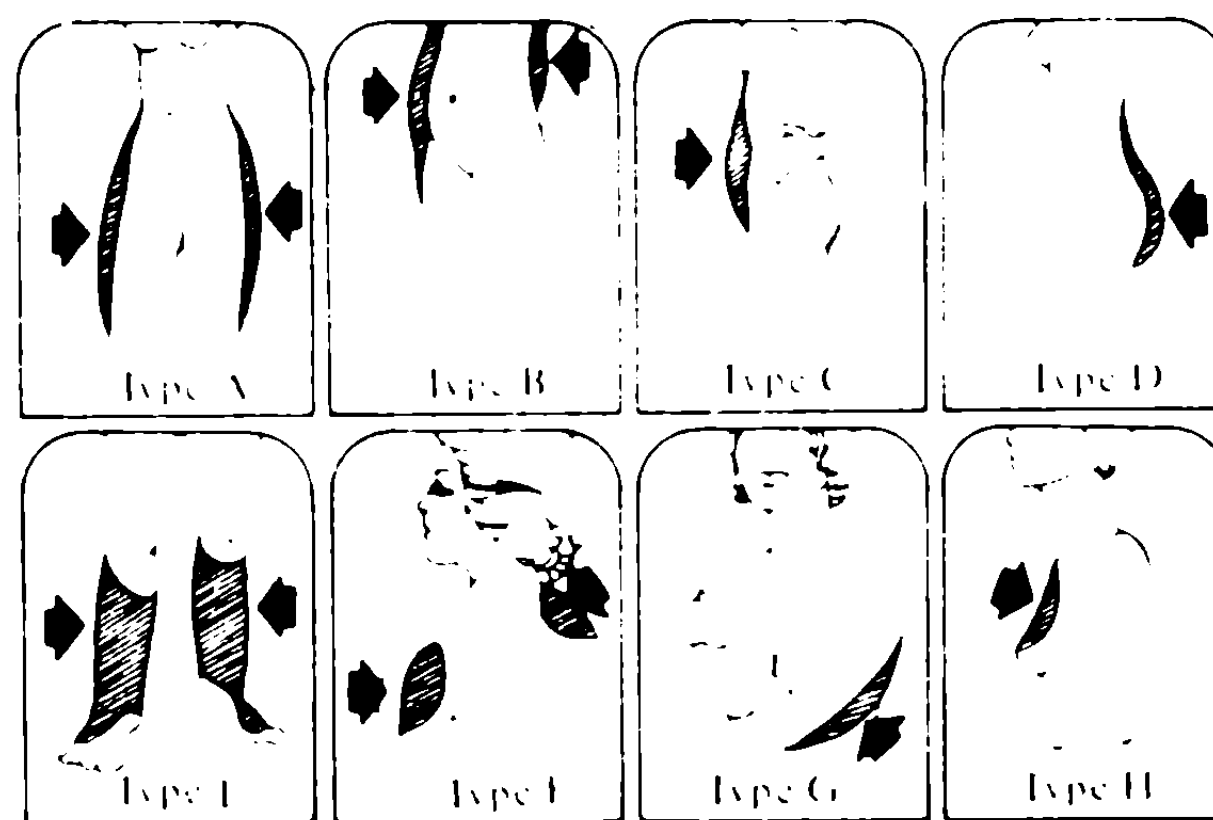
INCLUDES:

- 2 nights accommodation in twin bedded room with private facilities and TV and full English Breakfast.
 - One a la carte dinner or lunch (3 courses).
 - Sat theatre ticket from the selection offered each weekend.
 - Wallace Arnold luxury coach with video and toilet.
 - Sat a.m. tour of London.
 - Return from London Sunday p.m.
 - The London Ryan on all departures except 21 October which will stay at the Harewood Hotel.
- Deposit £10.00 at time of booking. Balance 6 weeks before departure. Theatre tickets subject to availability at time of booking.

WA Wallace Arnold

53 Corn Exchange, Leeds 1. Tel (0532) 434691

Women's Figure Problems.



Take a critical look at yourself in the mirror. Which type do you belong to? TYPE A Fat cushions on upper thighs TYPE B Heavy waistline TYPE C Ugly fat on tummy TYPE D Deformed bottom TYPE E Thick ankles TYPE F Heavy neck and shoulders TYPE G Flabby upper arms TYPE H Sagging bust You will soon lose all your inhibitions

**WE MAKE YOU THINNER GUARANTEED!
OR YOUR MONEY BACK**

You don't simply become thinner your figure is shaped according to your wishes! Take advantage of our free figure analysis

Swiss Figure Clinics

3rd Floor, Duncan House, 14, Duncan Street, Leeds 1. Telephone 435300
Open Monday-Thursday, 10 a.m.-8 p.m.; Fridays 10 a.m.-4 p.m.
Any patient of Swiss Figure Clinics U.K. is always welcome at any of our clinics in Switzerland, Zurich, Geneva, Lausanne, Berne, Lucerne, etc.

LEEDS CIVIC THEATRE

Leeds Arts Centre

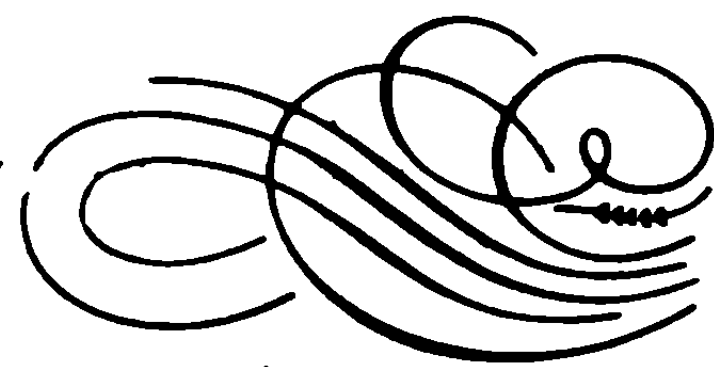
Proudly Present

THE TEMPEST

DIRECTED BY
TONY NELSON



4th to 8th OCTOBER,
1983



There are sources which Shakespeare may have used for his setting of what is almost certainly his last play (Sylvester Jourdain's "A Discovery of the Bermudas," Montaigne's "Of Cannibals" and William Strachey's "True Reportory of the Wrack)", but it is somewhat of a mystery where his characters and the plot originated. Most interesting, perhaps, is the fact that of all Shakespeare's plays "The Tempest" most nearly adheres to the "classical unities of time, place and action." In common with many stories throughout the world we have, on the one hand an enchanted island, a magician, a prince, a beautiful daughter, mystic banquets and conjured spirits, whilst on the other there is sin, remorse, conciliation and forgiveness in a microcosm of society.

"The Tempest," above all, is a fairy story, to be listened to and enjoyed. If there is any message in it which still holds true today it is that "the rarer action is in virtue that in vengeance."

G.A.N.

LEEDS ARTS CENTRE: Future Productions

6th to 10th December, 1983:

Alice's Adventures in Wonderland
and Through The Looking Glass.
By Lewis Carroll.

Dramatised by Clemence Dane.

14th to 18th February, 1984

The Duchess of Malfi by
John Webster.

he **PEST**



The **Characters in the Play:-**

ALONSO, King of Naples	TREVOR MONEY
SEBASTIAN, his brother	NICOLAS MONEY
PROSPERO, the right Duke of Milan	DAVID MALLINSON
ANTONIO, his brother, the usurping Duke of Milan	LES WORMALD
FERDINAND, son of the King of Naples	STUART MITCHELL
GONZALO, an honest old councillor	GOLDON CARLIN
ADRIAN	MARTYN DRAKE
FRANCISCO	GEORGE TEALE
CALIBAN	JIM YOUNG
TRINCULO, a jester	DAVID JARRETT
STEPHANO, a drunken butler	GORDON WILSON
Master of a ship	DENNIS STEVENSON
Boatswain	JOHN PEMBERTON
MIRANDA, daughter of Prospero	SHIRLEY HAMER
ARIEL, an airy spirit	PAM WILSON
IRIS	JUNE STEVENSON
CERES	DENISE SWIFT
JUNO	DORIENNE PEMBERTON
Spirits in the service of Prospero	JEAN BLUNDELL, BETTY TRIGGS
	CHRIS WILSON, MIRIAM FLETCHER,
	GILL THRESH, DENISE FORTON, SACHIA WORMALD

STAGE MANAGER	ANNE ROBINSON
ASSISTANT STAGE MANAGER	JULIE MITCHELL
LIGHTING	LAURIE BALL
SOUND	JIM MARSHALL
PROPERTIES	DENISE FORTON
PROMPT	JOYCE KING
COSTUME	MAGGIE RHODES, PEGGY DAKER
	AND THE CENTRE WARDROBE TEAM
	MALCOLM & MONICA BROWN
FRONT OF HOUSE MANAGER	JOHN PEMBERTON
BOX OFFICE	JUNE STEVENSON
LIAISON OFFICER	PEGGY DAKER
BOOKING MANAGER	

**With best wishes
for a successful show**

J. PULLAN and SONS LTD.

**Building Contractors
LEEDS**

YOUR LOCAL BUILDER SINCE 1885

Act 1.

Leap into the farce of a flashy advertising agency giving a mediocre service for extortionate prices.

Act 2.

Enter Portfolio and work happily ever after.

Portfolio

THE PORTFOLIO ADVERTISING GROUP

241-253 New Road Side, Horsforth,
Leeds LS18 4DR. Tel: (0532) 582353/584662.

E. PANTHER

ELECTRICAL CONTRACTORS LIMITED
Unit 4, Tower Works, Globe Road,
Leeds LS11 5QG Telephone: (0532) 433043

"Why not contact us for all your electrical requirements"

Industrial Commercial & Domestic installations

New work, alterations & improvements repairs and maintenance

MEMBERS OF THE NICEIC & ECA



No job too small
No distance too great

All work guaranteed,
free estimates,
prompt attention

**We are happy to have
been involved in the Civic
Theatre refurbishment**

Pick a Winner Every Time from Kitchens

fantastic musical selection

- Pianos ● Home Organs
- Keyboards
- Professional Instruments
- Group Gear
- Marching Band Instruments
- Sheet Music

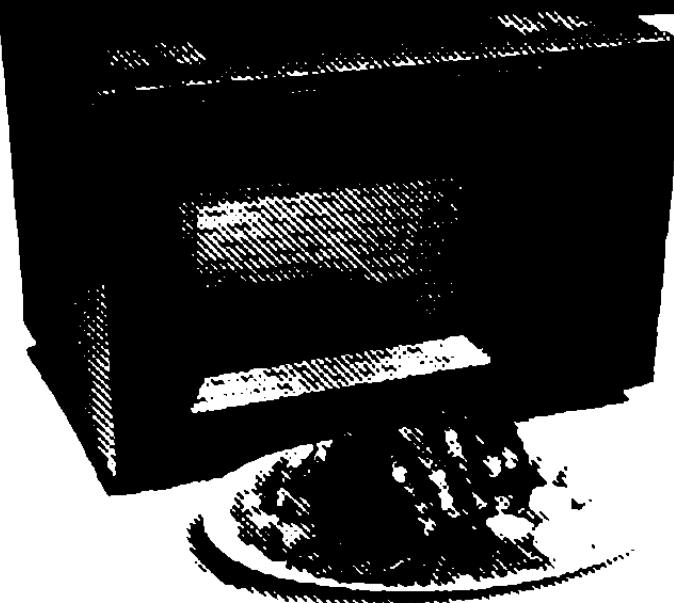
Best Service, Best Value . . .
the Everything in Music Store.

27-31 Queen Victoria Street, LEEDS LS1 6BD
(Tel. Leeds 446341)

Kitchens

EST. 1875 THE MUSIC PEOPLE

IT TAKES A GENIUS TO COOK STRAIGHT FROM THE FREEZER.



What do you call an oven that can defrost and cook in a single operation?

Or can be set to switch itself on up to ten hours in advance, then go

from cook to simmer automatically?

An oven that lets you do the cooking or does the cooking all by itself?

We call it the Genius. And it's just one of the outstanding range of microwave ovens from National.

For a personal introduction, just call in at the address below.

The Genius from

National

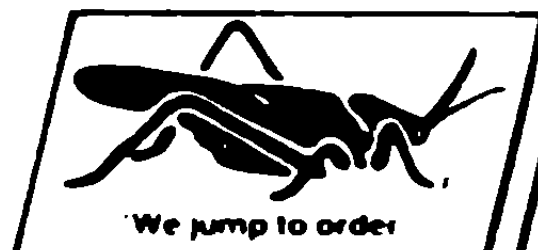
MICRO - OVENS

For largest range and most competitive prices
Both Catering and Domestic Ovens

234 EASTERLEY ROAD, LEEDS 8

1/2 mile north City Centre, near A581, 1/2
Wetherby Road - opposite Oakwood Bedeater
Steak House

TEL: LEEDS 402745



DALTONA

SHELVING ● INTER SIGNS ● STORAGE HANDLING EQUIPMENT

INTERSIGNS - The sign letters you can fix yourself -

Three dimensional letters moulded out of tough, durable acrylic based material. Range of styles and sizes. Immediate delivery ex-stock. Also CUT OUT PERSPEX LETTERS in many different styles. FREE ADVICE, DELIVERY AND FITTING SERVICE.

DISTRIBUTORS FOR:

TEBRAX Adjustable Aluminium Shelving
SPUR Adjustable Steel Shelving
STRUT Adjustable Steel Shelving
ERECTO & DEXION Slotted Angle & Tube
(Supplied and Erected)
SYSTEM 2000 Display Fittings
STRONGBEAM Quality Brackets
MYERS Pegboard Fittings
CONTI-BOARD Melamine Shelving

ALL PRODUCTS EX-STOCK AND
ON VIEW AT OUR SHOWROOMS

TEL: LEEDS 504878 / 501470

Unit 5, Moorfield Industrial Estate, Yeadon, Leeds LS19 7BN

Main Contractor for the Refurbishment of The Civic Theatre

A. S. Bradley Ltd.

(DECORATORS)

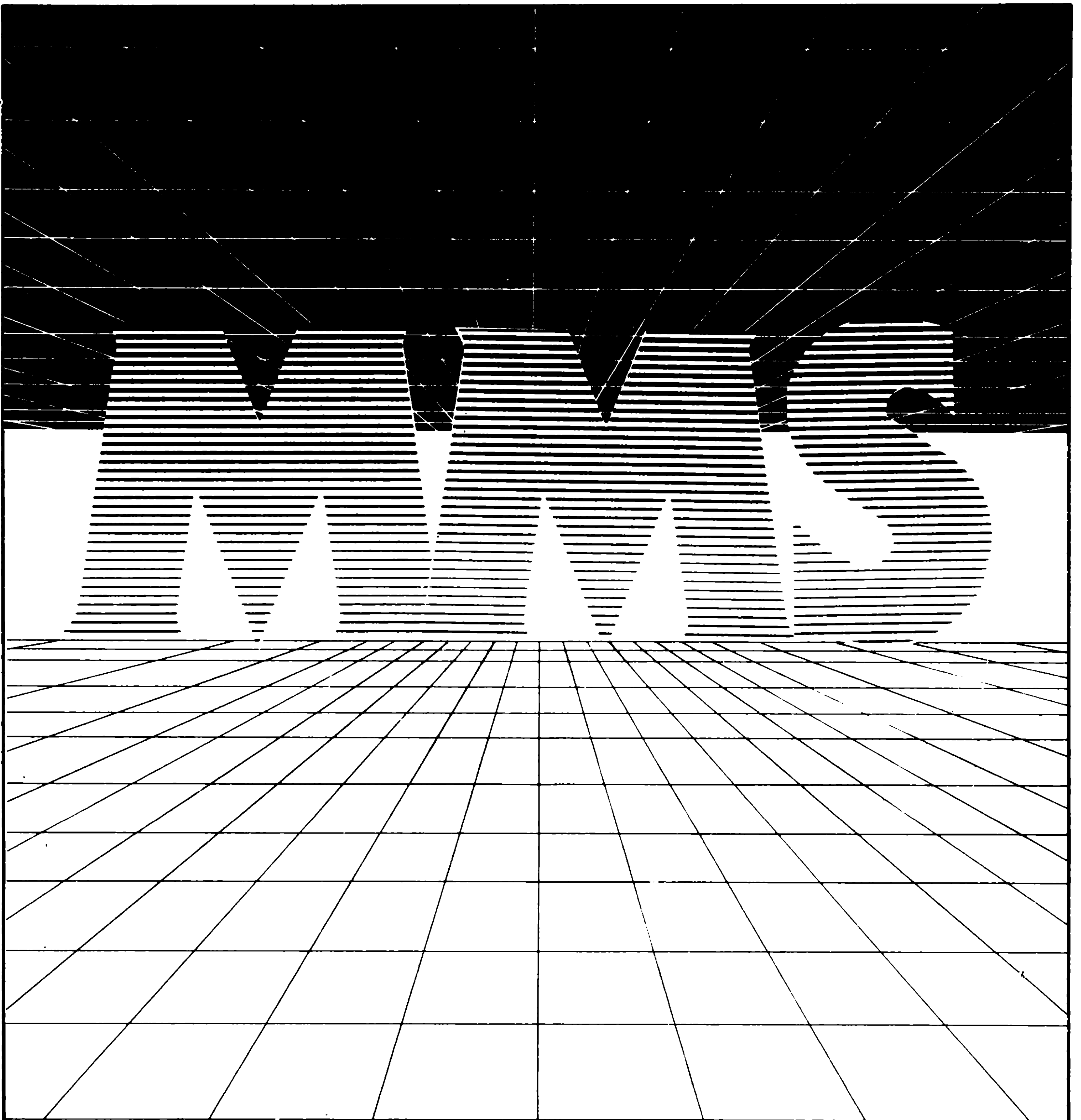


For all your painting requirements

PERIOD & MODERN DECORATIONS
FACTORY & OFFICE MAINTENANCE
PLAIN & MULTI-COLOUR SPRAYWORK
CORNICES & FIBROUS PLASTERWORK
ALL EXTERNAL MAINTENANCE PAINTING

WE ARE HOSPITAL, AND LOCAL
AUTHORITY APPROVED CONTRACTORS

TELEPHONES:
LEEDS 867804 — LEEDS 608961
"THE SMITHY" JINNY MOOR LANE
SWILLINGTON LS26 8PZ
Est. 1962



Metropolitan Marketing Services Ltd.

Specialist Publishing Consultants &

Advertising Contractors to Local Authorities

1 Wards End Southgate Halifax HX1 1DD Telephone 0422-42127 & 44145

★ ★ ★ **SPECIAL** ★ ★ ★
ATTRACTIONS

Civic
THEATRE LEEDS LEISURE SERVICES

DIRECT FROM TELEVISION LIVE ON STAGE ITV'S POPULAR MARRIAGE QUIZ GAME

MRS & MRS



DEREK BATEY
A SUPERB EVENINGS ENTERTAINMENT
LAUGHS GALORE FOR ALL THE FAMILY

★ **PLUS:** ★
★ Full Supporting Show of Music ★
★ Dancing Singing & Laughter ★

Sunday 29th January 1984
Two Performances at 5pm and 7.45pm
Tickets £2.50 and £2.00 Child/OAP £2.00 & £1.50
Parties of ten or more—one free seat for every ten booked!
All seats bookable at the Tourist Information Centre
Calverly Street, Leeds, Tel. 462453

Civic Theatre, Cookridge Street, Leeds LS2 8BH
Box Office 462453 (9 am to 5 pm) 455505 (7 pm to 8 pm) Management 456343 / 434389
Facilities for the Disabled

Civic
THEATRE LEEDS LEISURE SERVICES

★ Special Attraction ★
Sunday 11th December at 7.30pm

Brentwood Promotions Present

THE
MARIO
LANZA
STORY



Featuring
PETER FIRMANI
Jackie Firmani Curley Carter
Nigel Danford Richard Firmani

★ A Superb Evenings Entertainment ★

Re-live the life and music of the worlds most famous
Tenor. Here again these unforgettable songs
"BE MY LOVE" "BECAUSE" "LOVELIEST NIGHT OF THE YEAR"
SELECTIONS FROM "THE STUDENT PRINCE" "THE DESERT SONG"
ETC. ETC.

A NIGHT TO REMEMBER
Tickets £2 & £1.50 Child/OAP £1.50 & £1.00
Parties of ten or more—one free seat for every ten booked!
All seat bookable at the Tourist Information Centre
Calverly Street, Leeds Tel: 462453

Civic Theatre, Cookridge Street, Leeds LS2 8BH
Box Office 462453 (9 am to 5 pm) 455505 (7 pm to 8 pm) Management 456343 / 434389
Facilities for the Disabled

LEEDS CIVIC THEATRE

Cookridge Street, Leeds LS2 8BH
Management: 456343 — 434389
Box Office: 462453 (9 am to 5 pm) 455505 (7 pm to 8 pm)

GENERAL MANAGER & LICENSEE	:	BRIAN GODDARD
ASSISTANT MANAGER/BAR MANAGER	:	RICHARD PALMER
RESIDENT STAGE MANAGER		ANTHONY McMANUS
ASSISTANT STAGE MANAGER		PAUL KERR
DEPUTY STAGE MANAGER		PAULINE MOWER
THEATRE ELECTRICIAN		PETER WADDICOR

We hope you have enjoyed your visit to our theatre. If you would like to receive regular information about the theatre, please write to "The Mailing List", Leeds Civic Theatre, Cookridge Street, Leeds. LS2 8BH. If you are interested in becoming a Patron or Sponsor for this theatre, please write to the General Manager, at the above address.

Disabled Facilities

Leeds Civic Theatre can accommodate approximately 20 wheelchairs, if booked well in advance. Please ring 462453 for full details.

The Leeds Civic Theatre shares the Institute Buildings with the Leeds College of Music. This may mean that occasionally performances may be subject to slight acoustic problems. Whilst both parties do everything within their power to keep this to a minimum, we cannot prevent it completely. We apologise, therefore, for any inconvenience which may be caused.

In accordance with the requirements of the Licensing Sub-Committee of Leeds City Council.

- The public may leave at the end of the performance by all exit and entrance doors, and such doors must at that time be open.
- All gangways, passages and staircases must be kept entirely free from chairs or any other obstruction.
- Persons shall not be permitted to stand or sit in any of the intersecting gangways, or stand in any unseated space in the auditorium, unless standing in such a space as has been specially allowed by the Licensing Committee. A notice is exhibited in that part of the auditorium in which standing has been sanctioned.
- The safety curtain must be lowered and raised once immediately before the commencement of each performance so as to ensure it being in proper working order.

PLEASE NOTE: THE TAKING OF PHOTOGRAPHS DURING PERFORMANCES IS PROHIBITED

STRICTLY NO SMOKING IN THE AUDITORIUM

